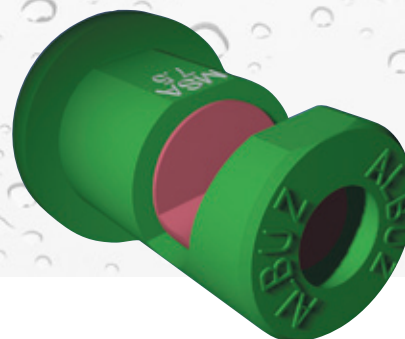


ALBUZ® APM

Wide angle flat spray anvil nozzle



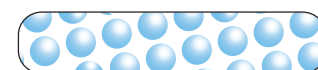
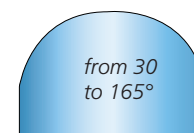
SPECIFIC CHARACTERISTICS

- For herbicide and liquid fertilizer applications: thanks to the exceptional wear resistance of ALBUZ pink ceramic, these nozzles can be used to spray suspension fertilizers.
- Flat jet (80° to 160° angle) providing coarse droplets without drift.
- Recommended pressure: 1 bar.**

Flow rate chart

Bar	YELLOW	ORANGE	RED	GREEN	BLUE	GREY	BLACK
0.5	0.39	0.64	0.97	1.30	1.62	2.30	3.00
1	0.55	0.91	1.37	1.84	2.29	3.25	4.24
1.5	0.67	1.12	1.68	2.25	2.80	3.98	5.19
2	0.78	1.29	1.94	2.60	3.23	4.60	6.00
2.5	0.87	1.44	2.17	2.90	3.61	5.14	6.70
3	0.95	1.58	2.38	3.18	3.96	5.63	7.34
3.5	1.03	1.71	2.57	3.43	4.28	6.08	7.93
4	1.10	1.82	2.74	3.68	4.58	6.50	8.48

SPRAY ANGLE



Angle of spraying versus pressure

Bar	YELLOW	ORANGE	RED	GREEN	BLUE	GREY	BLACK
0,5	30°	60°	75°	110°	120°	140°	140°
1	50°	80°	110°	120°	130°	140°	160°
1,5	70°	100°	120°	130°	130°	150°	160°
2	80°	110°	125°	135°	140°	160°	160°
3	95°	115°	125°	140°	140°	160°	165°
4	100°	120°	130°	140°	145°	160°	165°

Nozzle colour selection - recommended pressure (bar) nozzle spacing 1 m

Water L / ha	Km / h																						
	4	5	6	7	8	9	10																
50		0.6		0.8		1.1		0.5	1.5	0.7	1.9	0.8	2.3										
75	0.8	0.5	1.3	0.7	1.9	0.9	2.5	1.2	0.5	3.3	1.5	0.7	1.9	0.8									
100	1.5	0.8	2.3	1.2	3.3	1.6	0.7	2.1	0.9	0.5	2.7	1.2	0.7	3.3	1.5	0.8							
125	0.8	2.3	1.3	3.6	1.9	0.8	2.6	1.1	0.6	3.3	1.5	0.8	0.5	1.9	1	0.7	2.3	1.3	0.6				
150	1.2	3.3	1.9	0.8	2.7	1.2	0.7	3.7	1.6	0.9	2.1	1.2	0.8	2.7	1.5	1	3.3	1.9	1.2				
175	1.6	0.7	2.6	1.1	0.6	3.7	1.6	0.9	2.2	1.2	0.8	2.9	1.6	1	3.6	2	1.3	0.8	2.5	1.6			
200	2.1	0.9	0.5	3.3	1.5	0.8	0.5	2.1	1.2	0.8	2.9	1.6	1	0.7	2.1	1.4	0.9	2.7	1.7	1.1	0.6	3.3	2.1
250	3.3	1.5	0.8	0.5	2.3	1.3	0.8	3.3	1.9	1.2	0.8	2.5	1.6	1.1	3.3	2.1	1.3	0.8	2.7	1.6	1	3.3	
300	2.1	1.2	0.8	0.6	3.3	1.9	1.2	0.9	2.7	1.7	1.2	3.6	2.3	1.5	0.9	3.1	1.9	1.1	3.9	2.4	1.4		
350	0.5	2.9	1.6	1	0.8	2.5	1.6	1.2	0.7	3.6	2.3	1.6	0.9	3.2	2.1	1.2	2.6	1.5	3.2	1.9			
400	0.7	2.1	1.4	1.1	3.3	2.1	1.5	0.9	3.1	2.1	1.2	2.7	1.5	3.4	2	2.5							
450	0.9	2.7	1.7	1.3	0.8	2.7	1.9	1.1	3.9	2.6	1.5	3.4	2	2.5	3.1								
500	1.1	0.6	3.3	2.1	1.6	1	3.3	2.4	1.4	3.2	1.9	2.5	3.1										
550	1.3	0.7	2.5	2	1.2	2.9	1.7	2.3	3														